



**GUJARAT
INSTITUTE OF
DISASTER
MANAGEMENT**
BUILDING RESILIENCE



ANNUAL ACADEMIC REPORT
FINANCIAL YEAR 2025-26

Gujarat Institute of Disaster Management

FOREWORD



It is with great pride that we present the Annual Academic Report of GIDM for the Financial Year 2025–26. This report reflects our sustained efforts to strengthen disaster resilience across Gujarat, with a focus on building systems and capacities that are not only responsive but also proactive in addressing increasingly complex and emerging risks. In a time marked by the growing frequency and intensity of both natural and human-induced hazards, GIDM has remained committed to advancing disaster risk reduction through strategic and inclusive capacity-building initiatives. From policymakers to grassroots stakeholders, our efforts have aimed at fostering a culture of preparedness and enabling coordinated and effective responses to emergencies.

During the year, GIDM further expanded its outreach in capacity development, delivering specialized training programs for government agencies, industrial sectors and communities. Our emphasis on research and evidence-based policy support continued to guide our interventions, particularly in areas such as urban resilience and institutional strengthening, while the Doctoral and Postdoctoral Fellowship Programs gained momentum, contributing to high-quality research and indigenous knowledge in disaster risk management. The Institute also continued its Post Diploma in Industrial Safety (PDIS) program, expanding its reach through both full-time and part-time modes. Building on its strong reputation, the program achieved 100% engagement in career pathways, enabling students to secure their desired career outcomes and underscoring the strong industry demand for its graduates.

GIDM's engagement at the national and international levels has been strengthened through strategic collaborations. Partnerships with institutions such as Deakin University, Australia and the implementation of INSPIRE Program in collaboration with the Asian Disaster Preparedness Center, Bangkok have enabled the integration of global good practices into local contexts. Alongside sustaining a high volume of training programs (highest ever), the institute has also expanded its focus to emerging and critical sectors further enhancing its impact.

As we move forward, GIDM remains steadfast in its commitment to building a disaster-resilient Gujarat. While the risk landscape continues to evolve, we are confident that through innovation, collaboration and sustained efforts, we will continue to strengthen preparedness and resilience across the State.

We extend our sincere appreciation to all our stakeholders, partners and supporters for their continued cooperation and trust. Together, we reaffirm our commitment to building a safer and more resilient Gujarat for the future.

**Dr. Rajiv Kumar Gupta IAS (Retd.)
Director General**



सत्यमेव जयते

सुभाषचंद्र बोस आपदा
प्रबंधन पुरस्कार

गुजरात आपदा प्रबंधन संस्थान
को वर्ष २०२२ के लिए आपदा प्रबंधन
के क्षेत्र में विशिष्ट योगदान एवं उत्कृष्ट सेवा हेतु
प्रदान किया जाता है।

नई दिल्ली
दिनांक: २३ जनवरी २०२२




नरेन्द्र मोदी
प्रधान मंत्री



CONTENTS

FOREWORD	1
1. GIDM: AT A GLANCE	5
2. GOVERNANCE.....	7
3. ACTIVITIES & MAJOR INITIATIVES	10
4. TRAINING & CAPACITY BUILDING	123
5. APPLIED RESEARCH & DOCUMENTATION.....	26
6. ACADEMIC PROGRAMS AND E-COURSES	29
7. CONSULTANCY, PARTNERSHIPS AND REVENUE GENERATION.....	33
8. STRATEGIC PARTNERSHIP	35
9. OTHER NOTEWORTHY ACTIVITIES.....	36
10. SUSTAINABLE PRACTICES AT GIDM: A GREEN CAMPUS MODEL	40
ANNEXURE 1: List of Training Programs organized during FY 2025-26.	43

PRIME MINISTER'S 10 POINT AGENDA FOR DISASTER RISK REDUCTION

BUILDING A DISASTER RESILIENT INDIA

1



MAINSTREAM DRR IN DEVELOPMENT

Integrate disaster risk reduction into development sectors (housing, roads, etc.)

3



WOMEN'S LEADERSHIP IN DRR

Encourage greater involvement and decision-making roles for women

5



LEVERAGE TECHNOLOGY

Use advanced technology and data for efficient disaster management

7



USE SOCIAL MEDIA & MOBILE

Utilize platforms for early warning systems and education

9



LEARN FROM PAST DISASTERS

Studies and analysis of previous disasters to improve future preparedness

2



RISK COVERAGE FOR ALL

Provide insurance and safety nets for poor households and small businesses

4



INVEST IN RISK MAPPING

map and understand all hazards across India (earthquakes, floods, etc.)

6



GLOBAL UNIVERSITY NETWORK

Establish a network of universities to work on disaster risk issues

8



STRENGTHEN LOCAL CAPABILITY

Build local capacity and initiatives for a quicker response

10



FOSTER GLOBAL COOPERATION

Build cohesion and teamwork in international disaster responses

1. GIDM: AT A GLANCE

The Gujarat Institute of Disaster Management (GIDM), established on July 10, 2012, is an autonomous society registered under the Societies Registration Act, 1860 and the Bombay Public Trust Act, 1950. Since its inception, the institute has been at the forefront of strengthening disaster risk management in Gujarat through focused efforts in human resource development, capacity building, training, research and knowledge dissemination, with the objective of enhancing resilience across the state.

1.1 GUJARAT EARTHQUAKE OF 2001

The 2001 Gujarat earthquake remains a watershed moment in the state's disaster management history, bringing to light the critical importance of preparedness and institutional mechanisms. Despite the extensive damage caused, Gujarat's response stood out for its efficiency and scale, with rapid deployment of rescue and relief operations. The subsequent reconstruction and rehabilitation phase was executed in a planned and systematic manner, turning adversity into an opportunity for long-term resilience building. These efforts not only restored affected regions but also established Gujarat as a model for disaster recovery and resilience.

1.2 ESTABLISHMENT

Drawing from the lessons of the 2001 earthquake, the Government of Gujarat introduced the Gujarat State Disaster Management Act, 2003, to create a comprehensive framework for disaster risk management and to reduce the adverse impacts of disasters. Under this Act, the Gujarat State Disaster Management Authority (GSDMA) was constituted on September 1, 2003, with its headquarters in Gandhinagar. Key provisions of the Act include:

- Section 14: Assigns the Authority the role of maintaining a repository of disaster-related information and facilitating the establishment of a dedicated disaster management institute.
- Section 16(1)(c): Emphasizes the promotion of awareness, preparedness, and capacity building through training and guidance for communities and stakeholders.

Pursuant to these provisions, GIDM was established as a specialized institution to support and strengthen the disaster management framework in Gujarat. Over the years, it has continued to contribute through strategic initiatives, capacity-building programs and knowledge-driven interventions, playing a crucial role in advancing the vision of a safer and more resilient Gujarat.

1.3 GIDM: VISION, MISSION AND OBJECTIVES

Vision

“To establish GIDM as a state-of-the-art premier institute for training, education and research related to disaster risk management. GIDM will focus on enriching the capacities – in specific areas of prevention, mitigation, preparedness, relief, recovery, rehabilitation, reconstruction and sustainable development – of officials and other functionaries of the State and district administration, autonomous institutions and non-governmental organizations”.

Mission

“Make available to all stakeholders the knowledge and skills required to develop their individual competencies, gain appropriate understanding and accomplish appropriate disaster management tasks, while establishing and strengthening overall disaster management institutional capacities at the national, state and local levels”.

Objectives

- To serve as the apex institute in the State for disaster risk management capacity building.
- To provide disaster risk management related training to all the stakeholders.
- To assess the training needs of different government departments, offices, boards, corporations, local bodies and non-government organizations and others who may consent to be associated with it.
- To undertake activities for human resource development, public education and community awareness, safety etc. in disaster education and management.
- To undertake quality research projects on disaster risk management and mitigation covering both natural and human induced disasters.
- To act as a resource centre and clearing house of information on disaster risk management by documentation of field experiences including case studies, lessons learnt and best practices.
- To establish and maintain libraries and spread knowledge of DRM.
- To facilitate partnership with reputed national and international organizations, universities, institutions, bodies and individuals specialized in disaster risk management.
- To serve as a centre of excellence on disaster mitigation and management.
- To run and award degree/diploma/certificate courses on disaster risk management on its own or with the affiliation to any other institute/ universities, local/ national/ international.
- To undertake publication of newsletters, journals, reports, occasional papers, study reports etc.

2. GOVERNANCE

2.1 GOVERNING COUNCIL OF GIDM

The Governing Council (GC) of the Gujarat Institute of Disaster Management (GIDM), chaired by the Hon'ble Chief Minister of the State, functions as the apex supervisory and advisory body of the institute. It plays a crucial role in overseeing the overall functioning of GIDM, periodically reviewing its progress, and providing strategic direction to enhance its effectiveness.

A key mandate of the Governing Council is to guide the institute in setting and maintaining minimum standards for training, education and capacity-building initiatives in the field of Disaster Risk Management. Through its policy guidance and oversight, the Council ensures that GIDM's programmes remain relevant, high-quality, and aligned with emerging needs.

The Governing Council comprises the following eleven members

#	Designation	Status in Society
1.	Hon'ble Chief Minister, Gujarat	Chairperson
2.	Hon'ble Minister for Disaster management, Gujarat	Vice Chairperson
3.	The Chief Secretary, Government of Gujarat	Member
4.	Director General, GIDM	Member Secretary
5.	Commissioner of Relief, Revenue Department	Member
6.	Principal Secretary, Education Department	Member
7.	Principal Secretary, UD & UHD Department	Member
8.	Secretary, Roads and Building Department	Member
10	Chief Executive Officer, GSDMA	Member
11	Director General, Institute of Seismological Research	Member

2.2 EXECUTIVE COMMITTEE OF GIDM

The Executive Committee of GIDM supports the implementation of the policies and directions laid down by the Governing Council. It is headed by the Director General, GIDM, and is responsible for ensuring effective execution of the institute’s programmes and decisions.

#	Designation	Status in Committee
1.	Director General, GIDM	Chairperson
2.	CEO/ACEO, GSDMA	Member
3.	Representative from Revenue Department	Member
4.	Representative from Finance Department	Member
5.	Development Commissioner	Member
6.	Director General, Institute of Seismological Research	Member
7.	Director (F & A), GIDM	Member Secretary

The 20th Meeting of the Executive Committee was convened on July 31, 2025, followed by the 21st Meeting on February 12, 2026, to deliberate on a range of key matters. These meetings served as important platforms to review the progress of ongoing projects, assess institutional performance and chart the way forward.

Detailed discussions were held on project implementation timelines, resource utilization and emerging challenges. The Committee also emphasized the need to strengthen existing strategies and ensure their alignment with the broader objectives of the institute, thereby facilitating more effective and outcome-oriented decision-making.

2.3 DIRECTOR GENERAL

The Director General (DG) of the Institute is responsible for overseeing its day-to-day operations and overall administration. The DG exercises the powers delegated by the Governing Council and the Executive Committee, ensuring that all activities are aligned with their policies and directives. This includes implementing institutional policies, managing resources efficiently and coordinating programmes and initiatives to effectively advance the Institute’s vision, mission, and objectives.

2.4 ORGANISATIONAL STRUCTURE



3. ACTIVITIES & MAJOR INITIATIVES

GIDM remains steadfast in its commitment to strengthening the capabilities of stakeholders across all tiers of governance and society. Our comprehensive training and capacity-building programs reach a diverse spectrum of participants, including state and district administration officials, private sector professionals, academic and community-based organizations. This holistic approach encompasses the entire Disaster Risk Management cycle—spanning prevention, mitigation and preparedness to response, recovery, rehabilitation and long-term sustainable development.

The foundation of GIDM’s mission was established during its inaugural Governing Council Meeting in October 2013, guided by the visionary directives of the then Hon’ble Chief Minister of Gujarat, Shri Narendra Modi. These foundational mandates provided the initial impetus for building a disaster-resilient Gujarat. In the years following 2015, the Institute underwent a strategic recalibration to align its objectives with landmark global frameworks, including the Sendai Framework for Disaster Risk Reduction (SFDRR), the Sustainable Development Goals (SDGs) and the Paris Agreement, alongside the Hon’ble Prime Minister’s 10-Point Agenda on DRR.

By meticulously integrating these international principles into local operations, GIDM has bridged the gap between global policy and grassroots action. Particular emphasis is placed on enhancing the resilience of frontline responders, ensuring that adaptive, evidence-based solutions meet the unique needs of the state. Today, GIDM’s core activities are strategically structured around seven primary pillars: Training, Documentation, Applied Research, Academic Programs, Consultancy, Policy Making and Strategic Partnerships, ensuring a robust and multi-dimensional approach to disaster risk reduction.



Figure 3.1: Core Activities of GIDM

1. Training & Capacity Building

GIDM delivers specialized training programs, technical workshops, and targeted capacity-building initiatives designed to equip stakeholders with foundational knowledge in Disaster Risk Reduction. These programs are meticulously crafted to ensure that participants—ranging from frontline responders to senior administrators—can effectively deploy DRR tools and methodologies within their operational contexts.

2. Academic Programs

Through strategic collaborations with premier institutions and organisations, GIDM facilitates structured academic programs, including diplomas and specialized certifications. These initiatives aim to cultivate a new generation of professional experts and scholars dedicated to the fields of DRM.

3. Applied Research

GIDM identifies emerging risks and vulnerabilities to support the development of scalable disaster management solutions. This research-driven approach helps align Gujarat's strategies with evolving climate and industrial challenges.

4. Documentation & Knowledge Management

To ensure institutional continuity, GIDM systematically captures and analyzes best practices, case studies and critical lessons learned from past disaster events. By curating and disseminating this high-value knowledge, the Institute strengthens institutional memory and provides a robust evidentiary base that supports informed, decision-making across various sectors of the state administration.

5. Policy Advocacy

GIDM plays a pivotal role in shaping and refining policy frameworks that embed resilience into the core of governance systems. By providing technical inputs to state authorities, the Institute ensures that disaster risk reduction is integrated into long-term development planning and legislative mandates.

6. Strategic Partnerships

We foster a collaborative ecosystem by building robust partnerships with international organizations, national institutes and community stakeholders. These alliances enable GIDM to facilitate knowledge exchange, adopt global good practices and enhance the collective impact of disaster resilience initiatives.

7. Consultancy & Advisory Services

GIDM provides expert technical consultancy and advisory support to government departments, public sector undertakings and private industries. By offering specialized guidance on risk assessment, emergency planning, etc. the Institute helps organizations strengthen their disaster management protocols and infrastructure.

Building a Resilient Gujarat: GIDM 2025-26 Impact Report

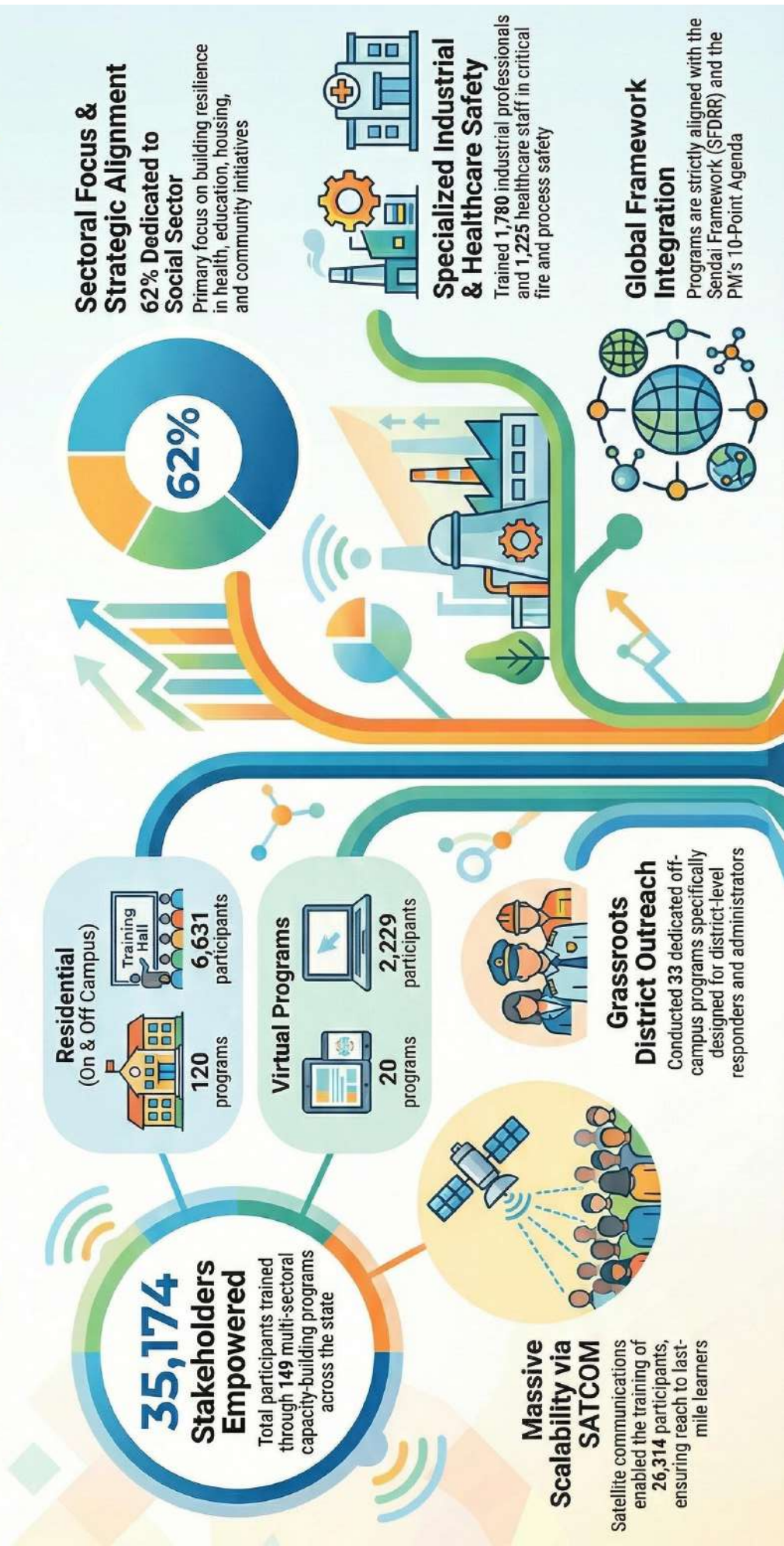


Figure 4.1 Overall Impact of GIDM's Training Initiatives

4. TRAINING & CAPACITY BUILDING

4.1 PARADIGM SHIFT IN CAPACITY DEVELOPMENT

To foster a culture of Disaster Risk Management (DRM) and Climate Resilience, GIDM is developing tailored, demand-driven approaches to enhance the capacity of stakeholders, including institutions, to analyze and manage disaster and climate risks. The ultimate goal is to strengthen risk-informed planning and governance.

GIDM's training programs for Disaster Risk Reduction (DRR) are designed in alignment with global frameworks, the Hon. Prime Minister's 10-Point Agenda and national and local DRM strategies and policies. These initiatives aim to enhance the coping capacities of all stakeholders, with a particular focus on empowering grassroots-level first responders.

The Frameworks Guiding Capacity Development Initiatives

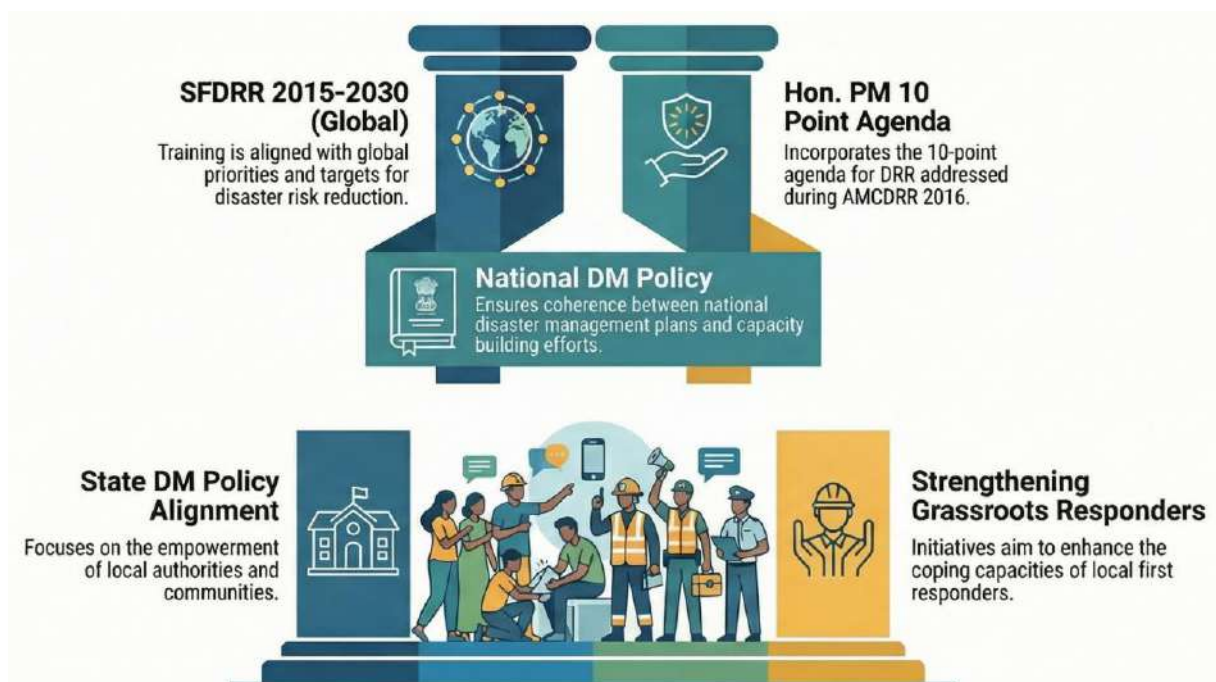


Figure 4.2 Guiding Frameworks and Policies for Capacity Building Initiatives

disaster-resilient society by engaging a diverse range of stakeholders through an innovative, multi-channel pedagogical approach. By integrating in-person training, district-level outreach, virtual classrooms and SATCOM-enabled facilities, the institute ensured that specialized knowledge remains accessible and effective, particularly for practitioners at the grassroots level. This strategic focus DRM culminated in the successful execution of 149 multi-sectoral capacity-building programs, effectively training and orienting 35,174 participants. These efforts, which extended beyond the GIDM campus to include 33 dedicated district-level programs, have been instrumental

Building Resilience: GIDM's Multi-Sectoral Approach to Capacity Development

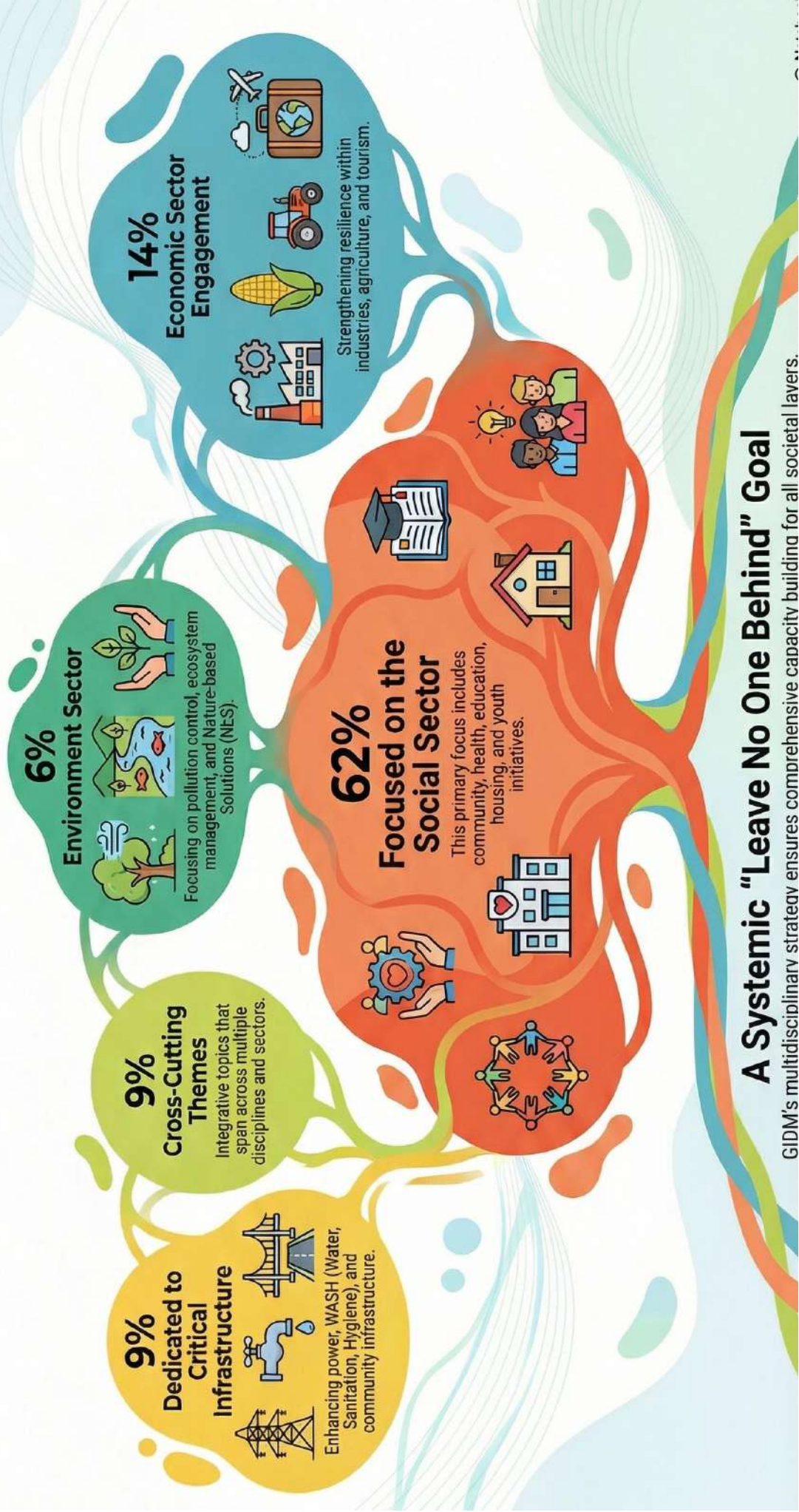


Figure 4.3: Sectoral Distribution of GIDM Training Programs

in strengthening the preparedness of last-mile learners. A comprehensive list of these initiatives is provided in **Annexure 1**, with a summary of the program categories and participant metrics outlined in the table below:

Trainings in F.Y 2025-26					
Mode		No. of Training Programs	Participants		
			Male	Female	Total Participants
1. Residential Programs		120	4136	2495	6631
1.1	<i>On Campus</i>	87	3127	1411	4538
1.2	<i>Off Campus (District Outreach)</i>	33	1009	1084	2093
2. Virtual Programs		20	1969	260	2229
3. SATCOM Programs		9	-	-	26,314
TOTAL		149	6105	2755	35,174

During the Financial Year 2025-26, GIDM has reinforced the understanding that DRM is an inherently multi-disciplinary and multi-sectoral subject, requiring a synchronized effort across all layers of governance and society. Recognizing that resilience cannot be built in isolation, GIDM has implemented a comprehensive and systematic training framework designed to break down sectoral silos and foster integrated risk reduction.

As visualized in the Institute's strategic model (previous page), this approach is anchored by a significant 62% focus on the Social Sector, ensuring that the resilience of community and the foundations of community life—including health, education, housing, etc.—are disaster-resilient. This is balanced by targeted engagement in Economic Sector Engagement (14%), Critical Infrastructure (9%) and Environment-based Solutions (6%), alongside Cross-Cutting Themes (9%) that bridge multiple disciplines.

By weaving together these diverse yet interdependent pathways, GIDM ensures a holistic capacity-building ecosystem that remains steadfast in its core mission: a Systemic "Leave No One Behind" Goal that reaches the most vulnerable last-mile learners.

4.2 INNOVATIVE/KEY TRAINING INITIATIVES

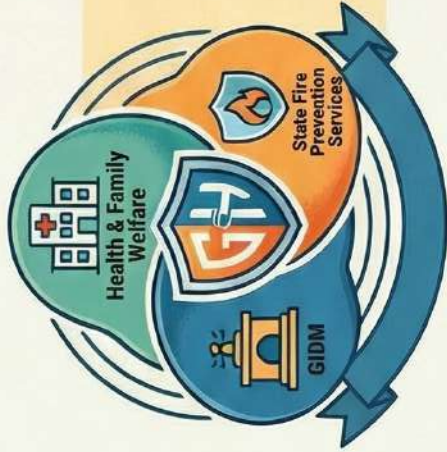
GIDM has introduced a range of new and specialized training initiatives aimed at further strengthening knowledge, preparedness, and emergency response capacities across multiple sectors. In collaboration with the Petroleum and Natural Gas Regulatory Board (PNGRB), the institute has implemented focused programs on Emergency Response and Disaster Management Plans (ERDMP) and the Safe Road Transportation of Hazardous Goods, addressing critical aspects of industrial safety and regulatory compliance. In addition, GIDM has expanded its outreach through targeted interventions on Hospital Fire Safety and Disaster Preparedness. These programmes are being systematically conducted at the district level for government hospitals across the State, ensuring localized capacity building and enhancing on-ground readiness. Brief details of select programs are given in the following section.

4.2.1 Building Healthcare Preparedness and Emergency Response

During the Financial Year 2025–26, GIDM accorded high priority to strengthening resilience within the health sector, recognizing its critical role in disaster preparedness, response and recovery. In collaboration with the Health & Family Welfare Department and the Gujarat State Fire Prevention Services, the Institute implemented targeted capacity-building initiatives aimed at enhancing fire safety preparedness and disaster management capabilities across district and sub-district hospitals in Gujarat. These interventions focused on equipping healthcare facilities and personnel with the necessary knowledge and skills to respond effectively to emergencies while ensuring continuity of essential services. During the period, GIDM has conducted 25 hospital-level training programmes across 9 districts, successfully orienting approximately 1,225 healthcare professionals. These efforts have significantly contributed to strengthening institutional preparedness, promoting a culture of safety, and reinforcing the overall resilience of the healthcare system in the state.



Building Resilience: Strengthening Gujarat's Healthcare Safety



STRATEGIC INITIATIVES & PARTNERSHIPS

Inter-Departmental Collaboration

GIDM works with Health and Fire Services to strengthen statewide healthcare resilience.

Focus on Hospital Infrastructure

Enhancing preparedness and disaster management capabilities specifically for district and sub-district hospitals.



TRAINING IMPACT (FY 2025-26)

25 Hospital-Level Programs

Intensive training sessions conducted across various districts to ensure local-level readiness.



1,225 Professionals Oriented



Over one thousand healthcare staff trained in critical disaster management protocols.

Figure 4.4: Impact of Training Programs on Strengthening Health Sector Resilience

4.2.2 Strengthening Resilience in the Oil & Gas Sector

During the Financial Year 2025–26, GIDM undertook significant initiatives to strengthen resilience in the Oil & Gas sector through a strategic collaboration with the Petroleum and Natural Gas Regulatory Board (PNGRB). The partnership focused on enhancing emergency preparedness, regulatory compliance and operational safety across the sector. As part of this initiative, a series of capacity-building programmes were organized on two critical themes. The first series focused on **Emergency Response and Disaster Management Planning** (ERDMP) in accordance with PNGRB regulations, aimed at strengthening institutional mechanisms for preparedness, response and recovery through robust planning and implementation frameworks. The second series addressed the **Safe Transportation of Hazardous Goods**, with emphasis on risk assessment, safety protocols, regulatory compliance, case study discussions and good practices to ensure secure handling and transit of hazardous materials.

These programmes were delivered through structured training interventions, including a three-day national-level programme that brought together approximately 120 senior and mid-level officials from leading Oil & Gas companies across India. The initiative facilitated knowledge exchange, practical insights and peer learning across organizations. Notably, the programmes were industry-supported, reflecting strong stakeholder commitment and ownership. Collectively, these efforts have contributed to enhancing sectoral preparedness and fostering a culture of safety and resilience within the Oil & Gas ecosystem.



Strengthening Safety: The GIDM & PNGRB Partnership



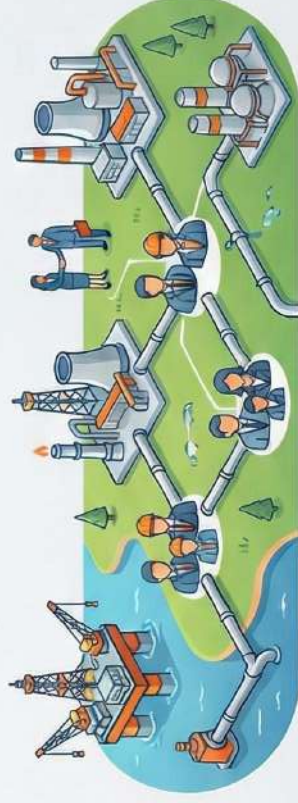
GIDM



PNGRB

Strategic MoU Partnership

GIDM and PNGRB have signed a formal agreement for joint capacity-building initiatives.



Nationwide Stakeholder Engagement

Participants include oil and gas companies and allied institutions from across the country.

Specialized Training Programs



Emergency Response & Disaster Management Plan

Specialized ERDMP training designed for stakeholders across the oil and gas value chain.



Collaborating to improve safety and emergency response across the entire oil and gas value chain through national capacity-building.



Safe Road Transportation

Focused training on the transport of hazardous and dangerous goods.

Figure 4.5: Impact and Outcomes of Training on Strengthening Resilience in the Oil and Gas Sector

4.2.3 Chemical & Industrial Disaster Risk Management

During the Financial Year 2025–26, GIDM significantly advanced its efforts in strengthening industrial resilience through focused safety and risk management initiatives. A series of specialized capacity-building programmes were conducted across key thematic areas, including Hazardous Material & Process Safety and Critical Rescue & Height Safety, addressing crucial aspects such as safe handling and transportation of hazardous materials, confined space rescue and working-at-height protocols, etc. These programmes were aligned with regulatory frameworks, including compliance with provisions under Section 111A, and were duly approved by the Directorate of Industrial Safety and Health (DISH), Gujarat.

The initiatives witnessed substantial outreach and impact, with over 1,841 professionals trained through 19 structured capacity-building programmes conducted at GIDM and various industrial estates. The trainings adopted a hybrid learning approach, combining classroom-based technical sessions with hands-on practical demonstrations using safety equipment. Through these comprehensive interventions, GIDM has strengthened the capacities of industrial stakeholders, fostering a culture of safety, regulatory compliance, and preparedness, thereby contributing to a more resilient industrial ecosystem in the state.



Strengthening Industrial Resilience: GIDM Safety & Risk Management



Figure 4.6: Impact and Outcomes of Training on Chemical & Industrial Disaster risk Management

4.2.4 Environment Impact Assessment

GIDM continued its initiative of offering specialized capacity-building programmes on Environmental Impact Assessment (EIA) to strengthen the ability of professionals to assess and mitigate environmental risks associated with developmental projects. The programme provides a comprehensive understanding of EIA processes, impact assessment methodologies, relevant legal and regulatory frameworks and the importance of public participation in informed decision-making.

The training covers critical areas such as air quality modelling, integration of EIA with Geographic Information Systems (GIS), and practical applications through lab visits and hands-on exercises. Designed for stakeholders involved in project planning and implementation, the programme equips participants with the necessary skills to systematically identify, predict, and manage potential environmental impacts. Through the continuation of this initiative, GIDM reinforces its commitment to promoting environmentally sustainable development and strengthening resilience across sectors.

4.2.5 Training of Resilient Infrastructure

GIDM continued its focused initiative on strengthening infrastructure resilience, recognizing its pivotal role in DRR and sustainable development. Building on the previous year's efforts, the institute carried forward a series of specialized capacity-building programmes aimed at enhancing the competencies of professionals involved in the planning, design, implementation and maintenance of disaster-resilient infrastructure across key sectors. The programmes addressed critical domains such as power systems, water and sanitation, Health and Education infrastructure and public roads and buildings, with a strong emphasis on sector-specific risks, vulnerabilities and mitigation strategies.

The training interventions provided comprehensive insights into risk assessment methodologies, climate-resilient infrastructure planning, retrofitting approaches, emergency response mechanisms and relevant policy frameworks. In the power sector, the focus was on understanding vulnerabilities across generation, transmission and distribution systems, along with strategies to strengthen grids and integrate renewable and smart technologies. In the water sector, the programmes emphasized risk-informed planning for irrigation systems in Gujarat, with a focus on enhancing resilience to climate variability and disaster risks. In addition, dedicated interventions in the health and education sectors highlighted the importance of developing disaster-

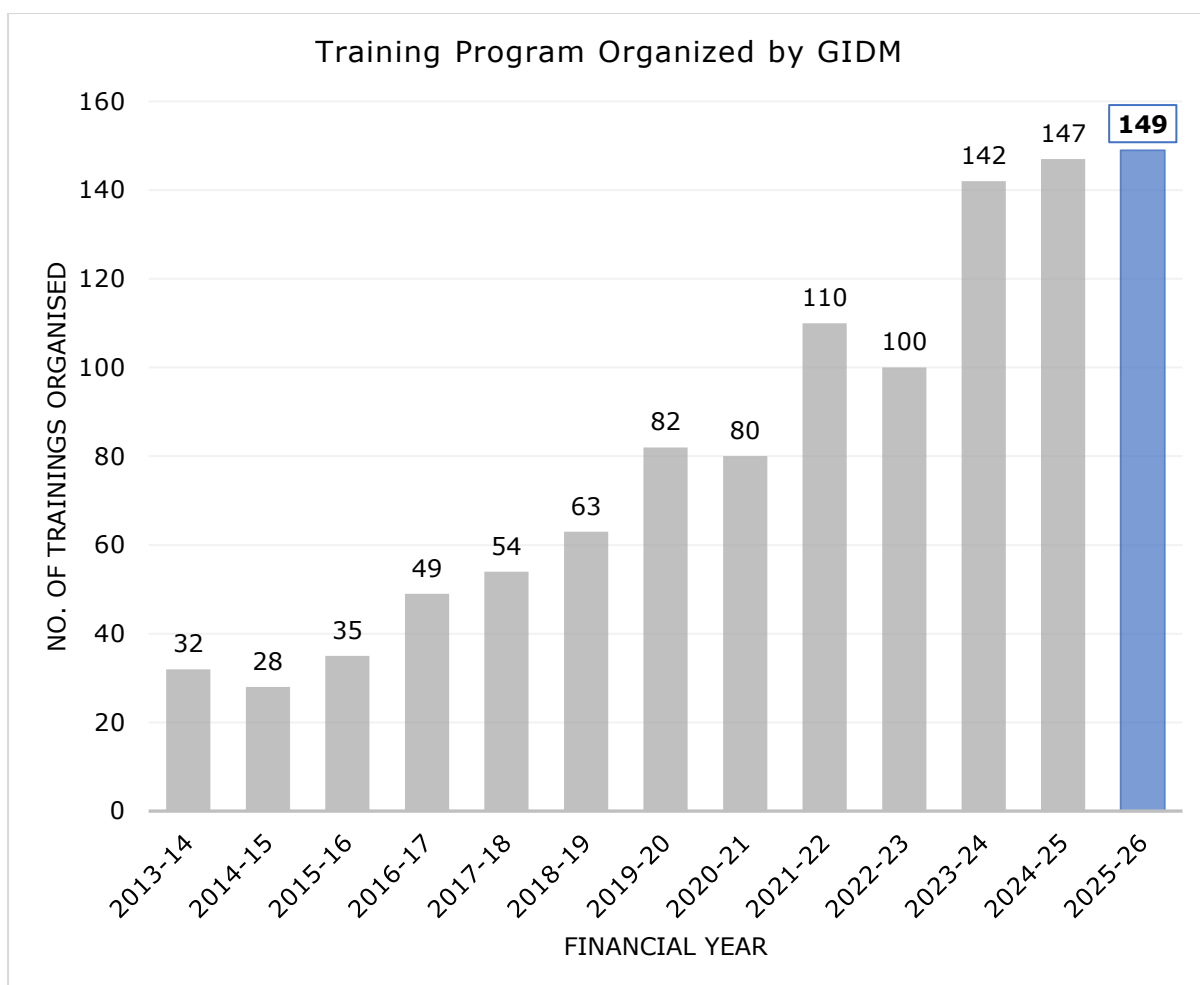
resilient and climate-friendly infrastructure to ensure continuity of essential services during emergencies. Across these sectors, the trainings promoted climate-adaptive solutions, sustainable resource management, and integrated planning approaches to strengthen overall infrastructure resilience.

These programmes were delivered through a blend of interactive lectures, case studies, technical exercises and group discussions, ensuring practical and application-oriented learning. Contributions from experts across government, academia and industry enriched the learning experience by bringing in diverse perspectives and good practices. Through the continuation of these initiatives, GIDM has further strengthened its commitment to enhancing infrastructure resilience in Gujarat, contributing to the long-term goal of ensuring that critical systems remain functional, safe and sustainable in the face of disasters



4.3 GIDM ACHIEVES HISTORIC MILESTONE IN CAPACITY BUILDING

During the Financial Year 2025–26, the Gujarat Institute of Disaster Management (GIDM) reached a significant institutional milestone by organizing **149 training programmes—the highest number conducted in a single year since its inception**. This record-breaking achievement not only surpasses all previous benchmarks but also underscores the Institute’s rapid expansion and its unwavering commitment to strengthening DRM capacities across the state.



These programmes were strategically designed to engage a diverse and comprehensive spectrum of stakeholders. By bridging the gap between government administration, the private sector, academia and community-based organizations, GIDM has fostered a unified front against disaster risks. This year’s initiatives were particularly notable for their focus on sector-specific needs, ensuring that specialized groups—from high-level policy makers to local grassroots responders—receive the precise technical knowledge required for risk-informed decision-making.

The unprecedented reach and scale of these efforts reflect GIDM’s evolving impact as a premier center of excellence. By prioritizing a coordinated, inclusive and proactive approach, the institute continues to enhance state-wide disaster preparedness and resilience, ensuring that every training program contributes directly to a safer and more resilient Gujarat.

A Decade of Scaling Impact: GIDM's Disaster Resilience Training Growth

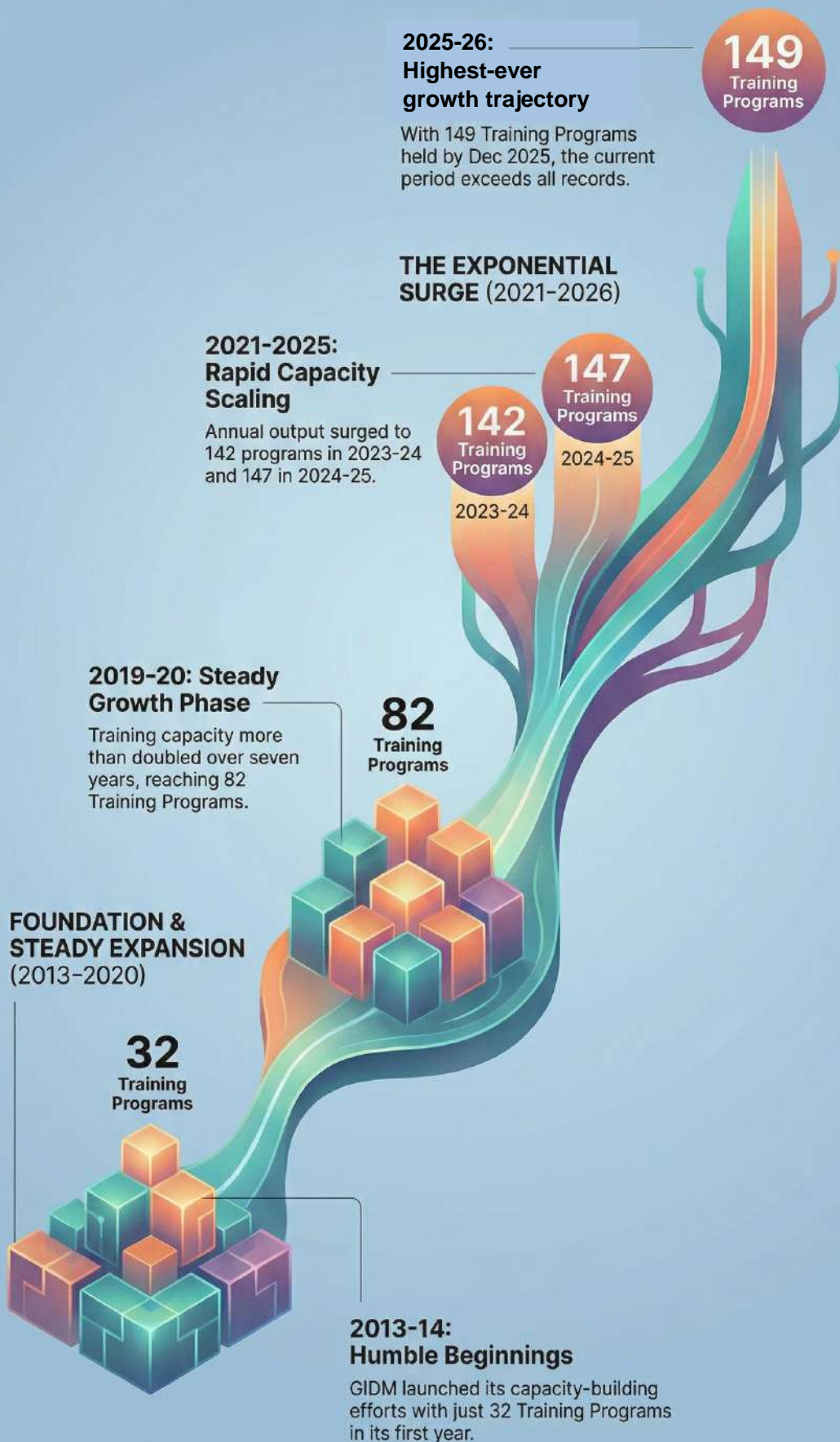


Figure 4.7: Growth in Training Programs at GIDM since Inception

5. APPLIED RESEARCH & DOCUMENTATION

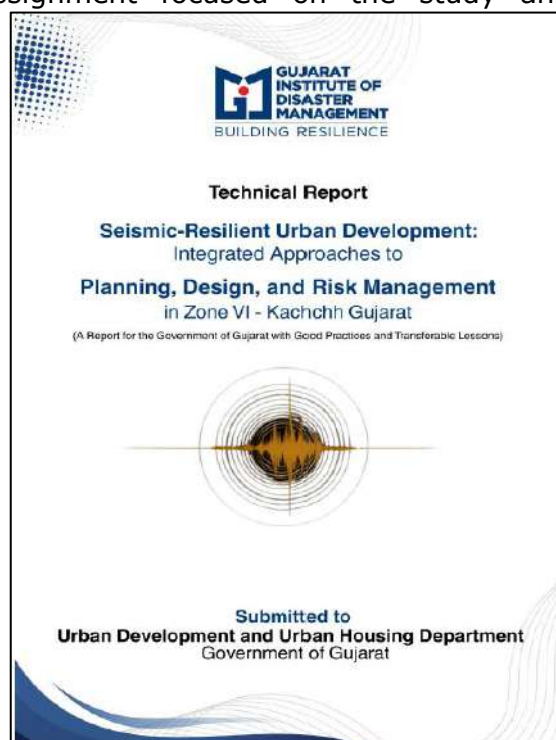
GIDM remains dedicated to enhancing the technical and scientific capacity of stakeholders by consolidating existing knowledge and generating new disaster risk information. Aligned with the Hon'ble Prime Minister's 10-Point Agenda on DRR, GIDM is committed to documenting and sharing lessons from past disasters to strengthen disaster resilience.

To support awareness and training, GIDM continues to develop diverse knowledge products, ensuring accessibility and wider outreach. Recognizing the critical role of applied research in understanding and addressing challenges across the Disaster Risk Management (DRM) cycle, GIDM integrates evidence-based strategies into its initiatives.

With a strong research-driven approach, GIDM actively collaborates with international, national and state-level organizations to advance knowledge and innovation in the field. Below are some of the key initiatives undertaken during FY 2024-25 in Applied Research & Documentation;

5.1 URBAN GOVERNANCE AND RESILIENCE: A RESEARCH-BASED APPROACH

GIDM undertook a critical policy-level assignment focused on the study and examination of the Comprehensive General Development Control Regulations (CGDCR) for the Kachchh district. Recognizing the unique geological sensitivities of the region, which falls under Seismic Zone V, the Urban Development Department (UDD) of the Government of Gujarat tasked GIDM with formulating necessary modifications to enhance structural and urban resilience. To ensure the highest level of scientific rigor and policy alignment, a multi-disciplinary Technical Advisory Panel (TAP) was constituted, comprising eminent experts from premier institutions including ISR, CBRI, IIT Roorkee, IIT Madras, CEPT University, GSDMA, and L.D. College of Engineering.





The study has been characterized by a robust, ground-up approach, involving extensive field visits to assess localized seismic risks and the organization of a Stakeholder Consultation Workshop. These interactive platforms allowed for a deep-dive into the practical challenges and technical requirements of earthquake-resilient construction. The project has been successfully completed, and the report has been submitted to the Urban Development and Urban Housing Department, Government of Gujarat. The report presents actionable recommendations for integrating seismic safety into the regulatory framework of Kachchh, offering a model for seismic-resilient urban development that balances rapid growth with disaster risk reduction.

5.2 DEVELOPMENT OF TRAINING MODULES

During the Financial Year 2025–26, GIDM further strengthened its commitment to evidence-based disaster resilience by advancing its documentation and knowledge development initiatives. Building on the foundational work of the previous year, the institute focused on developing and updating training modules while undertaking critical post-disaster documentation to translate technical knowledge into practical, field-oriented applications. These efforts were strategically aligned to bridge the gap between capacity building, research insights, and policy integration within the broader DRM framework.

During the year, GIDM emphasized enhancing technical capacity through the development of specialized modules incorporating emerging themes such as seismic safety, industrial risk and climate adaptation. At the same time, the institute promoted evidence-based decision-making by systematically documenting post-disaster experiences and capturing key lessons learned, thereby creating a valuable knowledge repository to inform future preparedness, response and mitigation strategies. These initiatives contributed to policy refinement and regulatory strengthening, supporting the integration of disaster resilience into planning frameworks and development guidelines, and fostering a proactive, data-driven approach to disaster preparedness across the state.

5.3 GIDM'S ROLE IN SUPPORTING THE MCR 2030 INITIATIVE

Making Cities Resilient 2030 (MCR 2030) is a global initiative aimed at enabling cities to strengthen their resilience against disasters and climate risks. GIDM continues to play a key supporting role in this ongoing initiative, extending technical guidance and capacity-building support to urban local bodies such as Mansa Municipality and GIFT City in advancing their resilience journeys.

As part of its sustained engagement, GIDM facilitates workshops, training programmes and knowledge-sharing platforms to equip city officials and stakeholders with the necessary tools, frameworks and strategies for DRR and climate resilience. These continuous efforts support cities in progressing through various stages of the MCR 2030 framework, including the development and implementation of Resilient City Action Plans and the integration of risk-informed approaches into urban planning and development processes.

Through this ongoing initiative, GIDM remains committed to strengthening urban resilience by promoting institutional capacity, technical expertise and strategic planning, thereby ensuring that cities in Gujarat are better prepared to address current and future disaster and climate challenges.

6. ACADEMIC PROGRAMS AND E-COURSES

GIDM, in recognition with the relevant government department and in collaboration with prestigious universities, has introduced academic programs that provide specialized education in relevant fields. These programs integrate the expertise of both GIDM and academic institutions, ensuring a curriculum that meets high academic standards while addressing emerging challenges in the field.

Additionally, to broaden its reach and enhance DRM awareness, GIDM has developed e-courses. These digital learning modules serve as powerful tools for disseminating essential knowledge and fostering a culture of preparedness among diverse groups, including educators, students, parents and community members.

6.1 POST DIPLOMA IN INDUSTRIAL SAFETY (PDIS) - FULL-TIME & PART-TIME

During FY 2025–26, GIDM continued its flagship Post Diploma in Industrial Safety (PDIS) programme, an initiative approved by the Technical Examinations Board (TEB), Government of Gujarat, to strengthen competencies in industrial safety and risk management. Building on the 100% success rate of the previous batch—where every graduate secured a role aligned with their professional goals—the programme has now expanded into both one-year full-time and two-year part-time formats to meet diverse learner needs. Supported by the PI Foundation under the PI Centre of Excellence, the course emphasizes practical expertise through industrial visits and hands-on training. By equipping participants with critical skills in safety audits and emergency response, GIDM continues to develop the skilled workforce necessary for risk-informed industrial growth in the State.



6.2 CERTIFICATION PROGRAM UNDER THE APPROVAL FROM DIRECTORATE OF INDUSTRIAL SAFETY AND HEALTH (DISH)

GIDM continues to implement specialized certification programmes on Chemical and Industrial Disaster Risk Management to strengthen safety practices across industrial and high-risk sectors. These programmes are approved by the Director of Industrial Safety and Health (DISH) under Section 111A of the Factories Act, ensuring regulatory alignment and technical credibility. The training portfolio encompasses key areas such as chemical process safety, handling and transportation of hazardous goods, confined space safety and rescue operations and safety protocols for working at heights. The programmes are delivered both at the GIDM campus and across industrial estates and districts, enabling wider outreach and context-specific learning. These initiatives play a crucial role in enhancing industrial safety awareness, strengthening compliance and improving emergency preparedness across the State.

6.3 E-COURSES ON DISASTER RISK MANAGEMENT AND SCHOOL SAFETY & SECURITY

During the Financial Year 2025–26, GIDM continued to expand and strengthen its digital learning initiatives to enhance awareness and capacity in DRM and School Safety & Security. These self-paced online courses are designed to simplify complex concepts by integrating real-world experiences with the latest research, making them accessible to a wide and diverse audience. Hosted on platforms such as, DIKSHA, and iGoT Learning Management System (LMS), the e-learning programmes have witnessed sustained participation and positive engagement.



The **five-hour self-paced e-course on “Understanding Disaster Risk Management”** continues to serve as a foundational programme, offering a structured understanding of disaster preparedness, response, and mitigation through practical

case studies and expert insights. The course has continued to attract large-scale participation, with cumulative enrollments about 2.30 lakh learners and a substantial number successfully completing the programme.

Similarly, **the one-day self-paced e-course on "School Safety & Security"** remains a key initiative aimed at a broad spectrum of stakeholders, including teachers, students, parents, school staff and government officials. The course comprehensively addresses critical areas such as policy and legal frameworks, disaster risk reduction in schools, safe infrastructure, child protection, and school disaster management planning. It continues to witness strong engagement, with a significant number of learners enrolling and completing the course since its launch.

Through these ongoing digital learning initiatives, GIDM continues to promote a culture of preparedness, strengthen knowledge dissemination and contribute to building safer and more resilient communities, particularly within the education sector.

6.4 POSTDOCTORAL AND DOCTORAL FELLOWSHIP PROGRAMMES

GIDM is implementing its Postdoctoral and Doctoral Fellowship Programmes to promote advanced research and innovation in disaster risk management and allied domains. The initiative is designed to attract high-quality researchers and scholars to undertake policy-relevant and applied research in areas such as climate resilience, urban governance, industrial safety and interdisciplinary risk studies. Through this programme, GIDM aims to strengthen its research ecosystem, generate evidence-based insights for informed decision-making, and reinforce its role as a centre of excellence and knowledge hub for disaster risk reduction and resilience-oriented development.



6.5 INTERNSHIP

GIDM continues to implement its structured internship programme as part of its commitment to capacity building and human resource development. Conducted in accordance with the institute's approved internship policy, the programme inducts students on a biannual basis for a defined duration, providing them with hands-on exposure to disaster risk management practices. Interns actively contribute to ongoing research, field-based activities, and knowledge initiatives, while gaining practical insights into the sector. This initiative not only supports institutional work but also fosters the development of skilled and informed professionals, contributing to a future-ready workforce in disaster risk reduction and resilience.



7. CONSULTANCY, PARTNERSHIPS AND REVENUE GENERATION

During the Financial Year 2025–26, GIDM continued to provide **expert consultancy and advisory services** to support disaster risk reduction and resilience-building efforts across government institutions, local authorities and the private and industrial sectors. Leveraging its multidisciplinary team of researchers and domain experts, the Institute has played a critical role in the preparation of contingency plans, development of training frameworks and formulation of capacity-building strategies. Building on its previous engagements, GIDM has continued to contribute to strategic assignments such as DRM Plans for major industrial and urban areas, safety manuals for critical infrastructure projects and the development of state-level safety frameworks. Ongoing consultancy work during the year includes the development of a Risk Assessment and Emergency Management Plan for Ekta Nagar. In addition, consultations are underway with relevant stakeholders for the preparation of a Disaster Management Plan for Dholera Special Investment Region (SIR), reflecting GIDM’s expanding role in supporting large-scale and strategically important infrastructure initiatives.

GIDM has also strengthened its engagement with the private sector through **Corporate Social Responsibility (CSR) partnerships**, positioning them as key stakeholders in advancing disaster resilience. Through these collaborations, the institute has mobilized additional resources to support specialized capacity-building programmes and sector-specific training initiatives. This approach has not only expanded the reach of DRM interventions but has also fostered a shared responsibility framework, encouraging industry participation in building a safer and more prepared ecosystem.

In parallel, GIDM continued to strengthen its institutional sustainability through the **optimal utilization of its training infrastructure**. By offering its state-of-the-art facilities to government departments, institutions, and private organizations for training and allied activities on a chargeable basis, the Institute ensured efficient resource use and sustained engagement throughout the year. This strategic approach has not only supported financial sustainability but also reinforced GIDM’s position as a premier hub for training and capacity building in disaster management.

Building on this, GIDM facilitated a substantial number of programmes for external agencies at its campus, with active involvement of its staff in planning, coordination and logistical support. During the Financial Year 2025–26, the institute coordinated

and hosted 164 such programmes, fostering greater institutional collaboration and cross-sectoral knowledge exchange.

Accordingly, when combined with GIDM’s own training initiatives, the **institute organized and coordinated a total of 313 programmes during the year**, underscoring its expanding role as a leading centre for capacity building and multi-stakeholder engagement in disaster risk management and allied domains.

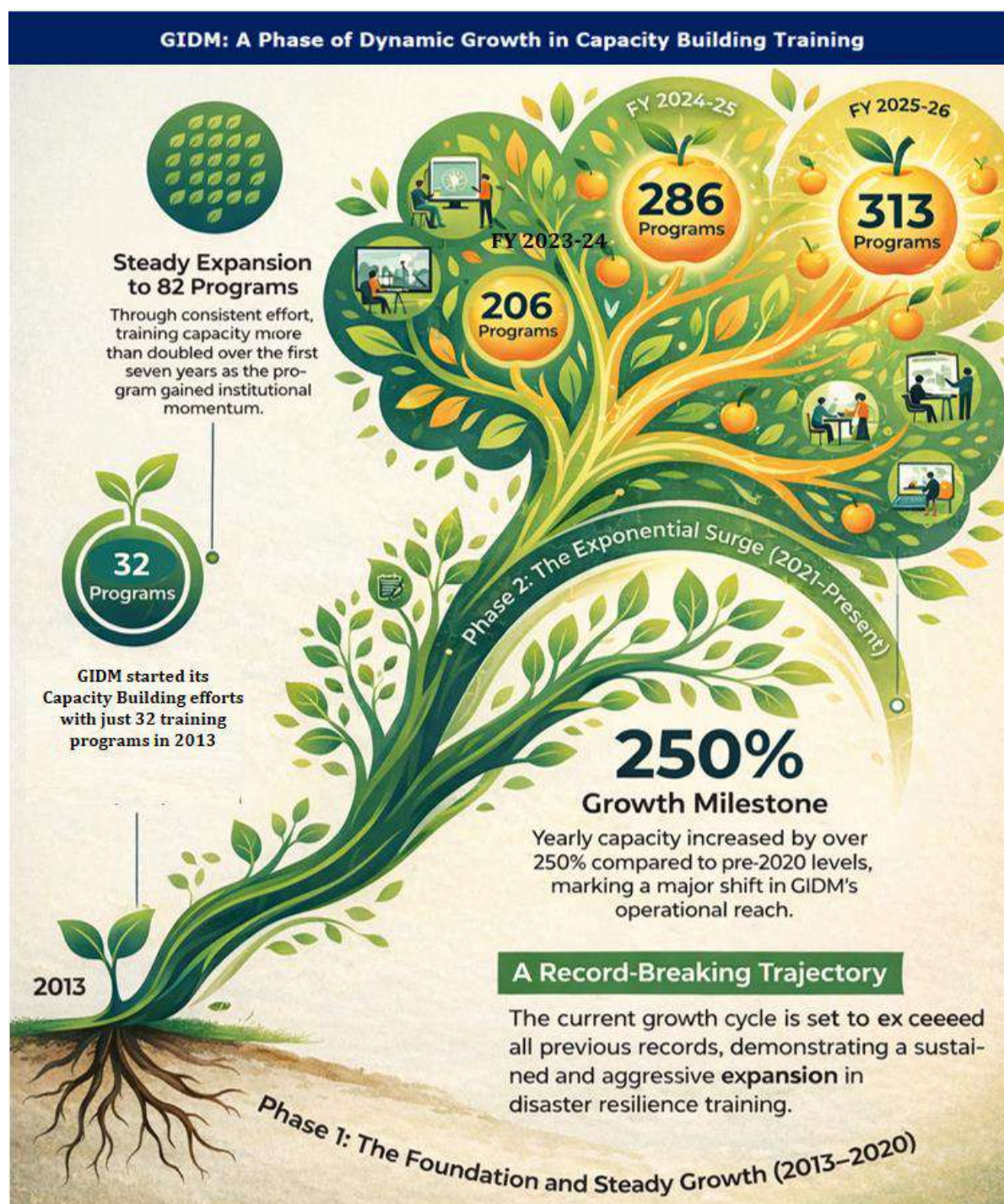


Figure 7.1: Growth Story of GIDM: Total Programs Coordinated Since Inception

8. STRATEGIC PARTNERSHIP

GIDM continues to strengthen strategic partnerships to enhance institutional capacity and programmatic impact. During FY 2025–26, GIDM has actively collaborated with leading national and international institutions, including the -

- Asian Disaster Preparedness Centre (ADPC), Thailand;
- Deakin University, Australia;
- Petroleum and Natural Gas Regulatory Board (PNGRB), New Delhi;
- National Fire Service College (NFSC), Nagpur;
- IIT-Gandhinagar;
- Sardar Patel Institute of Public Administration (SPIPA).

These partnerships have supported joint initiatives in capacity development, research, technical advisory and specialized training across key thematic areas of disaster risk management. Such collaborations reinforce GIDM’s role as a knowledge and capacity-building hub and contribute to advancing resilient and risk-informed development at the State, national and regional levels.



9. OTHER NOTEWORTHY ACTIVITIES

9.1 ACTIVITIES OF GUJARAT STATE FIRE ACADEMY (GSFA)

The Gujarat State Fire Academy (GSFA) at the GIDM campus in Gandhinagar continues to play a vital role in strengthening fire safety and emergency response capacities across the State. Established through a Memorandum of Understanding between GIDM and the Directorate of Fire Services, the Academy has been actively conducting training programmes for in-service fire personnel since its inception.

During the Financial Year 2025–26, GSFA sustained its efforts in delivering comprehensive theoretical and practical training programmes aimed at enhancing the skills, operational readiness and preparedness of fire service professionals and other stakeholders. The programmes focused on core firefighting techniques, emergency response strategies, safety protocols and awareness, thereby contributing to improved fire safety standards and more effective response mechanisms. Through these continued interventions, GSFA has significantly contributed to strengthening institutional capacity and enhancing overall disaster resilience in Gujarat.



9.2 INSTITUTIONAL STRENGTHENING THROUGH PREPAREDNESS AND INCLUSIVE RESPONSE IN INDIA (INSPIRE) PROGRAM

During the Financial Year 2025–26, GIDM initiated the the INSPIRE Programme in Gujarat, aimed at strengthening disaster preparedness, climate resilience and institutional capacity within the State’s industrial sector. The INSPIRE Programme is implemented by Asian Disaster Preparedness Center (ADPC) in India with the support of the National Disaster Management Authority (NDMA), in collaboration with relevant state government institutions. In Gujarat, the programme is being carried out in close partnership with GIDM, with a focus on strengthening industrial safety, enhancing preparedness and promoting inclusive and resilient development in high-risk industrial areas.

Recognizing Gujarat’s extensive industrial base and the increasing risks posed by natural hazards and climate change—particularly to chemical and industrial installations—the programme adopts a structured and forward-looking approach to industrial disaster risk management. It focuses on developing comprehensive disaster and climate risk assessments for selected industrial clusters through advanced tools such as GIS-based hazard mapping, vulnerability and exposure analysis, and climate impact assessments.

In parallel, the programme envisages the development of an integrated Industrial (Chemical) Emergency Preparedness and Planning Platform, incorporating features such as digital chemical inventory systems, real-time incident management, decision support systems for early warning and enhanced coordination mechanisms among industries, emergency responders and government agencies. The initiative also emphasizes stakeholder engagement and capacity building through targeted training modules, particularly addressing emerging risks such as NATECH (Natural Hazards Triggering Technological Disasters) events and challenges faced by MSMEs. Designed with a focus on scalability and replicability, the INSPIRE Programme aims to establish a robust framework that can be extended across industrial clusters in Gujarat, thereby contributing to safer and more resilient industrial development in the State.





9.3 INTERPRETATION CENTRE

GIDM continued to make steady progress towards the establishment of an interactive Exhibition Hall at its campus, envisioned as a key initiative for promoting experiential learning in disaster risk management. The Exhibition Hall is designed to serve as a dynamic knowledge and awareness platform, enabling visitors to better understand disaster risks, preparedness measures and mitigation strategies through immersive and engaging displays.

The project, originally conceptualized with design inputs from the National Institute of Design, Ahmedabad, has been progressively refined through expert consultations and guidance from the Advisory Committee, with its final design approved by the Governing Council. Following the approval for implementation, GIDM had initiated the execution phase through a formal procurement process, including the issuance of a Request for Proposal and award of contract for the development, supply, installation, and maintenance of exhibits and associated infrastructure.

During the year, the project continued to be actively monitored and reviewed at various stages and about to complete. Upon completion, the Exhibition Hall is expected to significantly strengthen GIDM's capacity for public awareness, training and knowledge dissemination in disaster risk reduction.

GIDM Interpretation Centre

Visitor Journey Map: Path to Resilience

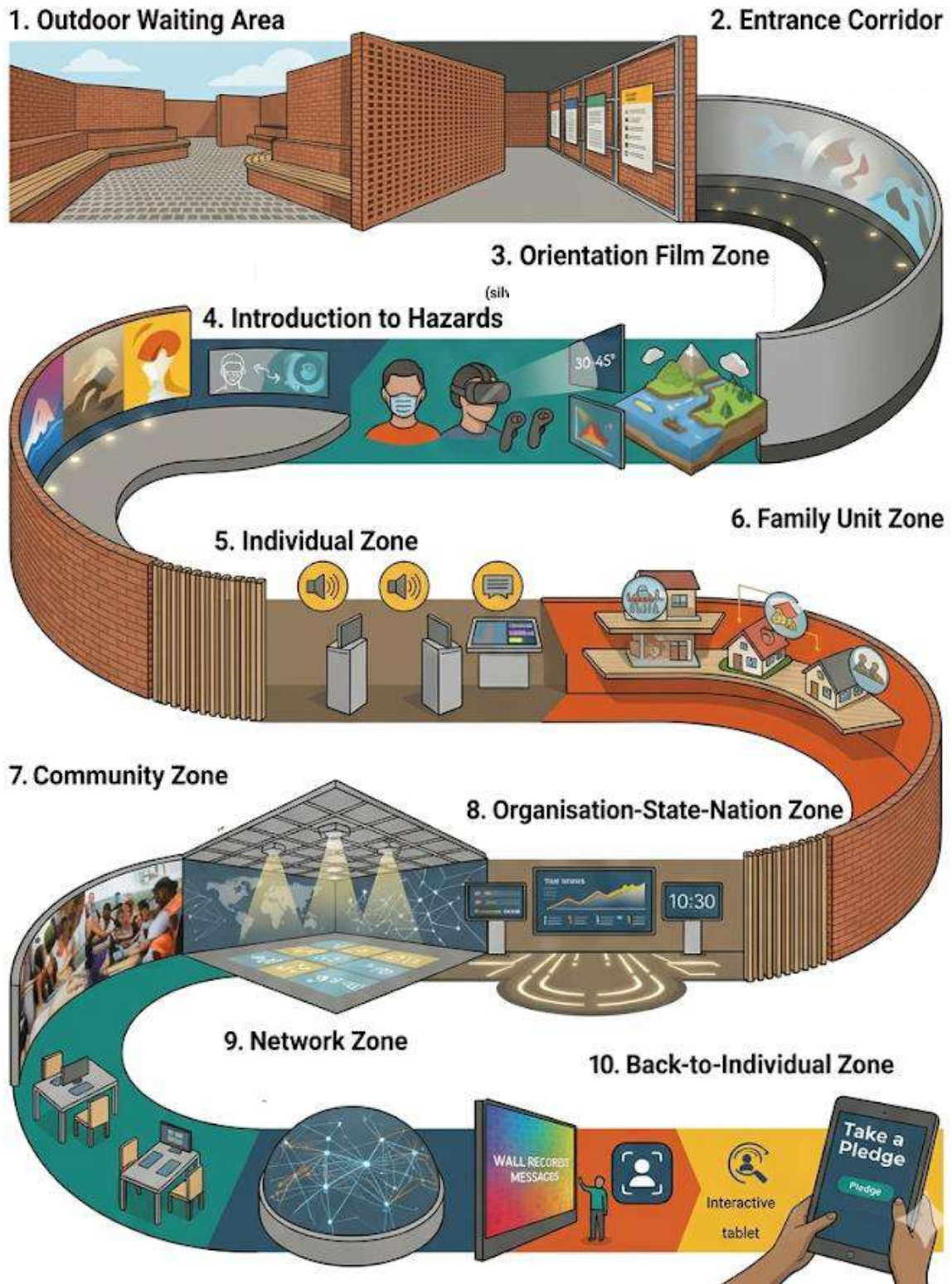


Figure 9.1: Illustrative Layout of the GIDM Interpretation Centre Zones

10. SUSTAINABLE PRACTICES AT GIDM: A GREEN CAMPUS MODEL

GIDM has integrated sustainability as a core institutional and operational principle, with its campus serving as a model for environmentally responsible planning and practices. Through a range of impactful green initiatives, the Institute demonstrates how academic and administrative spaces can effectively align with ecological stewardship. Key elements of this Green Campus approach include:

10.1 ROOFTOP SOLAR POWER SYSTEM INSTALLATION (110 kW)

GIDM has significantly reduced its dependence on non-renewable energy by installing a 110 kW solar power system. This installation not only helps in reducing the institute's carbon footprint but also ensures a consistent and clean energy supply for campus operations. It reflects GIDM's commitment to leveraging renewable energy sources to meet institutional power demands sustainably.



10.2 MIYAWAKI URBAN FOREST ON 2.5 ACRES OF LAND

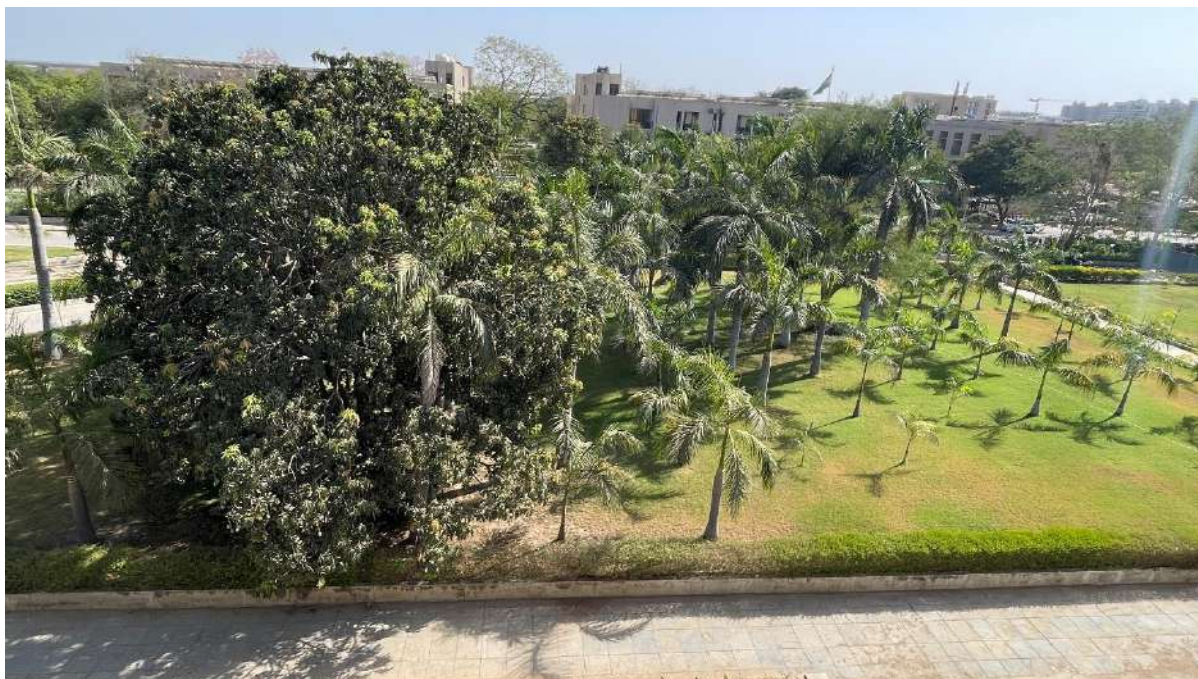
In a notable afforestation effort, GIDM has developed a Miyawaki urban forest spread over 2.5 acres, planting approximately 3,000 native tree species. The Miyawaki method, known for its dense and fast-growing vegetation, enhances biodiversity, improves air quality and creates a thriving green ecosystem. This urban forest serves as a carbon sink and a living classroom for environmental education and biodiversity conservation.



10.3 GREEN CAMPUS PLANTATION

Beyond the Miyawaki forest, GIDM maintains a rich green landscape across the campus with native and drought-resistant plants. Regular plantation drives and horticultural maintenance not only beautify the environment but also contribute to

temperature regulation and air purification, enhancing the overall well-being of campus occupants.



10.4 GROUND WATER RECHARGE THROUGH STORM WATER HARVESTING

To address water sustainability, GIDM has implemented systems for groundwater recharge through storm water harvesting. Rainwater from rooftops and paved surfaces is channeled into recharge pits, helping to replenish aquifers and mitigate urban water scarcity. This initiative strengthens the campus's resilience to water scarcity and supports sustainable water management practices.



10.5 MINIMAL USE OF PLASTICS

The institute actively discourages the use of single-use plastics across its campus. By promoting minimal plastic use, GIDM contributes to plastic waste reduction and environmental health. Staff and visitors are encouraged to adopt sustainable alternatives such as reusable bottles, containers and bags, reinforcing the campus's eco-friendly ethos.

The GIDM Green Campus Model: 5 Pillars of Sustainability

ECOLOGICAL RESTORATION & BIODIVERSITY

2.5-Acre Miyawaki Urban Forest

Approximately 3,000 native trees create a dense carbon sink that enhances local biodiversity.



Miyawaki Forest:

**General Plantation:
Campus-wide**

Temperature
regulation



Drought-Resistant Green Landscaping

Native plant species regulate campus temperature and purify the air with minimal water use.

RESOURCE EFFICIENCY & CONSERVATION

110 kW Rooftop Solar Power System

Leverages renewable energy to reduce the institute's carbon footprint and ensure clean power.



Storm Water Harvesting & Aquifer Recharge

Rainwater from rooftops and paths is channeled into pits to replenish groundwater supplies.



Minimal Plastic Initiative

Eliminates single-use plastics by promoting reusable alternatives like bottles and bags for visitors.

Figure 10.1: Sustainable Practices and Initiatives at GIDM Campus

ANNEXURE 1: List of Training Programs organized during FY 2025-26

April - 2025

#	Date	Title of the Program	Mode of Training	Participants		
				Male	Female	Total
1	2-3	Village Disaster Management Plan	Residential	40	7	47
2	4	Heatwave Preparedness and Mitigation	SATCOM	0	0	9209
3	16	Holy Dip Site Safety & Disaster Preparedness in Gujarat- Chanod (Vadodara)	District Outreach	112	4	116
4	16-17	Village Disaster Management Plan	Residential	31	14	45
5	21	Empowering Youth in Action for Disaster Resilience	Residential	23	10	33
6	23	Holy Dip Site Safety & Disaster Preparedness in Gujarat-Kabirvad (Bharuch)	District Outreach	85	4	89
7	24	Extreme Heat Prevention & Occupational Safety	Virtual	65	7	72
8	25	Static Electricity – Hazards and Prevention in the Chemical Industry	Virtual	73	1	74
9	29	Holy Dip Site Safety & Disaster Preparedness in Gujarat-Kabirvad (Dwarka)	District Outreach	108	15	123

May - 2025

#	Date	Title of the Program	Mode of Training	Participants		
				Male	Female	Total
10	5-7	Building Resilience in Power Sector	Residential	23	0	23
11	13-17	05 Day residential training programm on Basic Fire Safety for In-service Fire Personal from Municipal Corporations/ ULBs	Residential	31	0	31
12	21-22	Urban Risk Reduction and Resilience for Architects and Town Planners	Residential	20	9	29
13	23	Occupational Health Management in the Industrial Sector	Virtual	59	4	63
14	23	Hospital Fire Safety & Disaster Management (Banas General Hospital, Palanpur)	District Outreach	29	23	52

15	26 May – 6 June	80th NFSC Divisional fire officer (DO) and Instructor course Industrial Training	Residential	24	0	24
16	26-27	Cyclone Risk Management: Preparedness & Response	Residential	31	2	33
17	27-28	Role of Panchayati Raj Institutions in DRM	Residential	44	10	54
18	30	Hospital Fire Safety & Disaster Management (Dakor CHC, Kheda)	District Outreach	20	29	49
19	31	Multi-hazard Early Warning System in India/Gujarat	SATCOM	0	0	3428
20	31	Hospital Fire Safety & Disaster Management (Nadiad Civil Hospital, Kheda)	District Outreach	16	24	40

June - 2025

#	Date	Title of the Program	Mode of Training	Participants		
				Male	Female	Total
21	6	Understanding and Implementation of Drought Manual for Effective Preparedness & Response	Virtual	104	45	149
22	10-12	Flood Risk Mitigation and Management	Residential	21	5	26
23	10-11	Role of PRIs in DRM	Residential	21	15	36
24	11-13	Building Resilience in Water Infrastructure	Residential	29	4	33
25	9-13	05 Day residential training program on Basic Fire Safety for In Service Fire Personal from Municipal Corporations/ Municipalities)	Residential	34	0	34
26	6-7	Working at Heights Safety	Residential	77	2	79
27	16-17	TTL training Program for In-service officers & Staff (Municipalities)	Residential	27	0	27
28	16-27	90th NFSC Station Officers batch (STO) course Industrial Training	Residential	34	0	34
29	20	Empowering Youth in Action for Disaster Resilience	Residential	19	0	19
30	26	Medical Preparedness & Response in Chemical Emergencies	District Outreach	48	12	60
31	30	Fire Safety Management in Industrial Installations: Preparedness, Prevention & Response	Virtual	58	6	64
32	26	Understanding Lightning Risk & Safety Measures	Virtual	200	39	239
33	30	Prevention of Vector-Borne Diseases (ASHA Workers)	SATCOM	0	0	2479

July - 2025

#	Date	Title of the Program	Mode of Training	Participants		
				Male	Female	Total
34	1-5	05 Day residential training program on Basic Fire Safety for In Service Fire Personal from Municipal Corporations/Municipalities)	Residential	31	0	31
35	1	Prevention of Vector-Borne Diseases (Aganwadi Workers)	SATCOM	0	0	1525
36	2-3	Building Climate and Disaster Resilience in Schools	Residential	32	4	36
37	3-4	Disaster, Law and Governance at Village Panchayat Level	District Outreach	11	8	19
38	10	Flood Early Warning System in India/Gujarat	Virtual	10	10	20
39	15-16	Post Disaster Needs Assessment (PDNA)	Residential	4	24	28
40	18	Basics of DRM & Fire Safety (Mehsana Nursing College)	Residential	8	46	54
41	18-19	Building Disaster and Climate Resilience in Schools	Residential	36	6	42
42	25	Orientation Training Program on FSCOP portal	Residential	45	0	45
43	29-30	Disaster Risk Management in Cultural Heritage Sites and Precincts	Residential	13	6	19
44	29-31	Navigating Environmental Impact Assessment and Clearance Processes	Residential	25	10	35
45	30-31	Building Disaster and Climate Resilience in Schools	Residential	24	13	37
46	31	Adapting to Rainfall Extremes Disaster Risk Reduction and Agriculture Strategies	Residential	15	1	16
47	31	Emergency Response Code	Virtual	164	5	169

August - 2025

#	Date	Title of the Program	Mode of Training	Participants		
				Male	Female	Total
48	1	Disaster Management Training for NCC Cadets	District Outreach	0	398	398
49	1-2	Building Disaster and Climate Resilience in Schools	Residential	31	3	34
50	2	Orientation to the Principles of Disaster Risk Management, Fire Safety and First-Aid	Residential	17	71	88
51	8	Ecosystem based Approaches to Climate Change Adaptations and Disaster Risk Reduction	Virtual	57	14	71
52	13	Basics of DRM & Fire Safety (Mehsana District Bank College of Nursing)	Residential	31	80	111
53	19-20	Urban Flood Risk Management	Residential	54	3	57
54	21-22	Building Disaster and Climate Resilience in Schools	Residential	40	3	43
55	21	Orientation to the Principles of Disaster Risk Management, Fire Safety and First-Aid	Residential	21	85	106
56	22	Orientation to the Principles of Disaster Risk Management, Fire Safety and First-Aid	Residential	39	64	103
57	28	Hospital Fire Safety & DRM	District Outreach	45	22	67
58	28	First Responder Training for PCR van Official	Residential	40	2	42
59	29	Crisis Management Plan	Virtual	195	13	208

September - 2025

#	Date	Title of the Program	Mode of Training	Participants		
				Male	Female	Total
60	6	Implementing Health and Disaster Risk Management (Health EDRM)	Residential	14	59	73
61	9	Preventing Drowning Securing open water sites to protect every life	SATCOM	0	0	4
62	10	GIDM Orientation Program (under RRU's Two Weeks ITEC Training Programme on Geoinformatics, Disaster Risk Reduction & National Security)	Residential	19	11	30

63	11	Hospital Fire Safety & Disaster Management	District Outreach	41	39	80
64	16-17	Risk Management and Animal Care Building Livestock Resilience	Residential	28	8	36
65	18	Hospital Fire Safety & Disaster Management	District Outreach	29	28	57
66	19	Hospital Fire Safety & Disaster Management	District Outreach	34	18	52
67	19-20	Building Resilient Communities: Disaster Preparedness training for Volunteers	Residential	42	0	42
68	22	Basic Fire Safety and Basic Life Support (BLS) for PT Teachers of the Schools	Residential	68	11	79
69	23	Basic Fire Safety and Basic Life Support (BLS) for PT Teachers of the Schools	Residential	23	9	32
70	24	One-day Training on 'Process Safety Management (PSM) Implementation	Residential	37	3	40
71	25	Basic Fire Safety and Basic Life Support (BLS) for PT Teachers of the Schools	Residential	18	14	32
72	26	Process Safety Gap Assessment: Advantages & Pitfalls	Virtual	197	13	210
73	29	Workshop on "Seismic Resilient Development (SRD) in Kachchh: Mainstreaming Risk-Informed Planning and Development	Residential	24	0	24

October - 2025

#	Date	Title of the Program	Mode of Training	Participants		
				Male	Female	Total
74	3-4	Media Management during Disasters	Residential	24	11	35
75	4	Hospital Fire Safety & Disaster Management	District Outreach	20	34	54
76	7	Orientation to the Principles of Disaster Risk Management, Fire Safety and First-Aid	Residential	36	5	41
77	8	Basic Fire Safety and Basic Life Support (BLS) for PT Teachers of the Schools	Residential	77	29	106
78	9-10	Disaster Financial Management at Panchayat Level	District Outreach	20	10	30
79	9	CCPS India Regional Meeting	Residential	76	7	83
80	9	Preventing Fire Hazards: Community awareness for Safer Diwali	SATCOM	0	0	561

81	10	Expert Talk on World Mental Health Day	Virtual	57	6	63
82	10	Empowering Youth in Action for Disaster Resilience	Residential	28	0	28
83	16	Hospital Fire Safety & Disaster Management	District Outreach	29	20	49
84	16	Learning's from LG Polymer Incident: A Regulator's Perspective	Virtual	111	2	113
85	27	Hospital Fire Safety & Disaster Management	District Outreach	8	19	27
86	28	Hospital Fire Safety & Disaster Management	District Outreach	23	37	60
87	29	Hospital Fire Safety & Disaster Management	District Outreach	29	14	43
88	29	"Coastal Ecosystems, Community Resilience & Disaster Risk Reduction (DRR)	Virtual	32	26	58
89	29	Integrating Psychosocial Support & Mental Health into Disaster Response & Recovery	Residential	25	17	42
90	30	Hospital Fire Safety & Disaster Management	District Outreach	20	23	43

November - 2025

#	Date	Title of the Program	Mode of Training	Participants		
				Male	Female	Total
91	3-4	Disaster Financial Management at Panchayat Level	Residential	29	15	44
92	11-13	Capacity Building on Emergency Response and Disaster Management Plan (ERDMP)	Residential	30	1	31
93	18	Hospital Fire Safety & Disaster Management	District Outreach	23	24	47
94	18-19	Orientation to the Principles of Disaster Risk Management, Fire Safety and First-Aid"	Residential	82	32	114
95	19	Hospital Fire Safety & Disaster Management	District Outreach	24	23	47
96	20	Hospital Fire Safety & Disaster Management	District Outreach	17	28	45
97	21	Hospital Fire Safety & Disaster Management	District Outreach	29	34	63
98	24	Process Safety Challenges with Scale-up of Operations	Virtual	90	8	98
99	26-28	Building Competency in Safe Road Transportation of Hazardous Goods	Residential	39	0	39
100	29	Understanding Basics of DRM & Fire Safety for GINERA	Residential	6	103	109

December – 2025

#	Date	Title of the Program	Mode of Training	Participants		
				Male	Female	Total
101	1	Training of Trainers on Disaster Financial Management at Panchayat	District Outreach	25	8	33
102	4	Understanding Basics of DRM & Fire Safety for Sardar Patel College	Residential	31	73	104
103	4-5	Training on Role of Panchayati Raj Institutions in Disaster Risk Management	Residential	40	8	48
104	5	Understanding Basics of DRM & Fire Safety for Chaudhary College	Residential	1	100	101
105	6	Understanding Basics of DRM & Fire Safety for Swaminarayan College	Residential	25	46	71
106	10	Hospital Fire Safety & Disaster Management	District Outreach	19	19	38
107	11	Hospital Fire Safety & Disaster Management	District Outreach	19	8	27
108	11	Learning from Major Process Safety Incidents	Virtual	109	6	115
109	23	Hospital Fire Safety & Disaster Management	District Outreach	29	18	47
110	24	Hospital Fire Safety & Disaster Management	District Outreach	39	26	65

January - 2026

#	Date	Title of the Program	Mode of Training	Participants		
				Male	Female	Total
111	5-9	Basics of Fire Safety for Inservice Fire man	Residential	39	0	39
112	6-8	Emergency Response and Disaster Management Plan	Residential	28	1	29
113	8	Hospital Fire Safety & Disaster Management	District Outreach	20	30	50
114	9	Hospital Fire Safety & Disaster Management	District Outreach	12	32	44
115	19	Hospital Fire Safety & Disaster Management	District Outreach	13	23	36
116	20	Hospital Fire Safety & Disaster Management	District Outreach	13	30	43
117	20-21	Management of Nuclear and Radiological Emergencies (NRE)	Residential	31	0	31
118	27-28	Disaster Recovery & Risk Informed Planning Lessons Learned and Reflections from 2001 Earthquake	Residential	11	14	25
119	29-31	Building Competency in Safe Road Transportation of Hazardous Goods	Residential	23	2	25
120	29	Advancing Process Safety: Global Insights and Key Learnings from CCPS Programs	Virtual	94	6	100

February - 2026

#	Date	Title of the Program	Mode of Training	Participants		
				Male	Female	Total
121	3-4	Strengthening Earthquake Resilience through IS 1893 2025 – Key Challenges and Design Implications	Residential	37	10	47
122	5-6	Turn Table Ladder Training	Residential	25	0	25
123	9	One Day Orientation program on Disaster Risk Management (DRM)	Residential	24	0	24
124	9-13	Basic of Fire Safety" for in-service Fireman/Sainik/Marshal at GIDM.	Residential	32	0	32
125	16-20	Basic of Fire Safety" for in-service Fireman/Sainik/Marshal at GIDM.	Residential	26	0	26
126	17	School Safety and Security (PM-SHRI Schools)	Residential	121	37	158
127	19-21	First Responders training for PCR Van Officials	Residential	31	3	34
128	23	Behavior Based Safety: Strengthening Safety Culture in Industries	Virtual	99	8	107
129	23	School Safety and Security (PM-SHRI Schools)	Residential	121	34	155
130	24	A One-day Training on 'Process Safety Management (PSM) Implementation'	Residential	24	0	24
131	25	Role of Youth and Volunteers in Disaster Risk Management	Residential	159	41	200
132	26-27	Disaster Preparedness and Response in Healthcare Facilities	Residential	19	6	25
133	27	School Safety and Security (PM-SHRI Schools)	Residential	138	53	191

March – 2026

#	Date	Title of the Program	Mode of Training	Participants		
				Male	Female	Total
134	5-6	Strengthening Veterinary Preparedness for Disaster Risks One Health Approach	Residential	36	2	38
135	5	Understanding Basics of DRM & Fire Safety	Residential	15	41	56
136	9-10	Disaster Preparedness and Response in Healthcare Facilities	Residential	18	10	28

137	10	Turn Table Ladder Training	Residential	13	0	13
138	11-12	Integrating Psychosocial Support & Mental Health into Disaster Response & Recovery	Residential	11	16	27
139	13	Child-Friendly Spaces and MPCS for Emergency Response	Residential	47	11	58
140	13	School Safety and Security (PM-SHRI Schools)	Residential	118	51	169
141	16	Extreme Heat Awareness & Preparedness for ASHA Workers & Paramedic Staff	SATCOM			245
142	16	Personnel Protective Equipment Training and Distribution Program	Residential	32	0	32
143	17	Extreme Heat Awareness & Preparedness for Aganwadi Workers	SATCOM			8839
144	17	Personnel Protective Equipment Training and Distribution Program	Residential	24	0	24
145	18	Personnel Protective Equipment Training and Distribution Program	Residential	42	0	42
146	23-25	Navigating Environmental Impact Assessment & Clearance Processes	Residential	25	18	43
147	24	Industrial Hazardous Waste Management: Strengthening Compliance and Environmental Responsibility	Virtual	125	15	140
148	24	Heat Preparedness & Response Plan	SATCOM	0	0	24
149	27	Awareness Program on Multi-Hazard Early Warning System in India/Gujarat	Virtual	70	26	96
Total Participants Trained/ Oriented						35,174



**GUJARAT
INSTITUTE OF
DISASTER
MANAGEMENT**

BUILDING RESILIENCE



CONTACT US



Email: info-gidm@gujarat.gov.in



PHONE: +91 79 23275804



ADDRESS: GIDM, Raysan,
Gandhinagar, Gujarat, India.



GIDM WEBSITE:
gidm.gujarat.gov.in

BUILDING RESILIENCE

